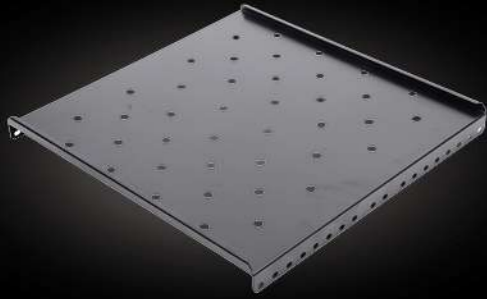


CABINET
SYSTEMS

Accessories



Fixed Shelf

Product Information		
Model No.	Specification	Description
980113014 ■	45 Fixed shelf	19" installation for 450 depth wall mounted cabinet
980113015 ■	MZH 60 Fixed shelf	19" installation for 600 depth MZH wall mounted cabinet
980113016 ■	MW 60 Fixed shelf	19" installation for 600 depth MW wall mounted cabinet
980113017 ■	60 Fixed shelf	19" installation for 600 depth cabinet
980113018 ■	80 Fixed shelf	19" installation for 800 depth cabinet
980113019 ■	90 Fixed shelf	19" installation for 900 depth cabinet
980113020 ■	96 Fixed shelf	19" installation for 960/1000 depth cabinet
980113021 ■	110 Fixed shelf	19" installation for 1100 depth cabinet
980113022 ■	120 Fixed shelf	19" installation for 1200 depth cabinet

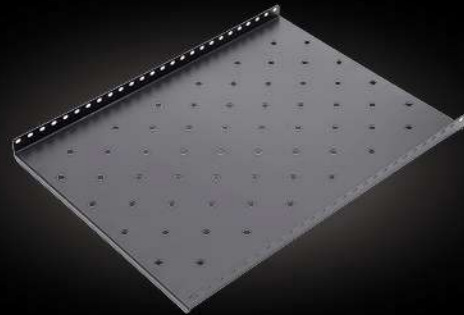
Remark : When ■ =0 , denotes Gray(RAL7035SN), When ■ =1 , denotes Black(RAL9004SN)



Sliding Shelf

Product Information		
Model No.	Specification	Specification
980113029 ■	60 Sliding shelf	19" installation for 600 depth cabinet
980113030 ■	80 Sliding shelf	19" installation for 800 depth cabinet
980113031 ■	90 Sliding shelf	19" installation for 900 depth cabinet
980113032 ■	96 Sliding shelf	19" installation for 960/1000 depth cabinet
980113033 ■	110 Sliding shelf	19" installation for 1100 depth cabinet
980113034 ■	120 Sliding shelf	19" installation for 1200 depth cabinet

Remark : When ■ =0 , denotes Gray(RAL7035SN), When ■ =1 , denotes Black(RAL9004SN)



Heavy Duty Fixed Shelf

Product Information		
Model No.	Specification	Description
980113023 ■	60 Heavy duty fixed shelf	19" installation for 600 depth cabinet
980113024 ■	80 Heavy duty fixed shelf	19" installation for 800 depth cabinet
980113025 ■	90 Heavy duty fixed shelf	19" installation for 900 depth cabinet
980113026 ■	96 Heavy duty fixed shelf	19" installation for 960/1000 depth cabinet
980113027 ■	110 Heavy duty fixed shelf	19" installation for 1100 depth cabinet
980113028 ■	120 Heavy duty fixed shelf	19" installation for 1200 depth cabinet

Remark : When ■ =0 , denotes Gray(RAL7035SN), When ■ =1 , denotes Black(RAL9004SN)



L Rail

Product Information		
Model No.	Specification	Description
980113005 ■	45 L rail	(280 L rail) for 450 depth MW/MZH/MP wall mounted cabinet
980113006 ■	MZ 60 L rail	(325 L rail) for 600 depth MZH wall mounted cabinet
980113007 ■	MW 60 L rail	(425 L rail) for 600 depth MW/MP wall mounted cabinet
980113008 ■	60L rail	60 L rail for 600 depth cabinet
980113009 ■	80L rail	80 L rail for 800 depth cabinet
980113010 ■	90L rail	90 L rail for 900 depth cabinet
980113011 ■	96L rail	96 L rail for 960/1000 depth cabinet
980113012 ■	110L rail	110 L rail for 1100 depth cabinet
980113013 ■	120L rail	120 L rail for 1200 depth cabinet

Remark : When ■ =0 , denotes Gray(RAL7035SN), When ■ =1 , denotes Black(RAL9004SN)



Fan Unit With
Thermostat

Product Information		
Model No .	Specification	Description
980113078 ■	1U Fan unit with thermostat	With 220V thermostat (Thermostat unit, for 2 way fan unit)

Remark : When ■ =0 , denotes Gray(RAL7035SN), When ■ =1 , denotes Black(RAL9004SN)



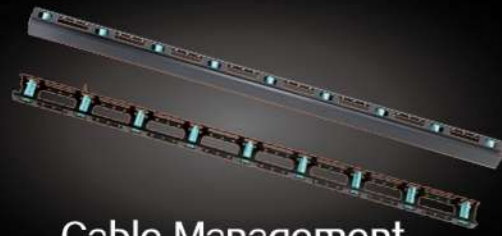
Cable Tray

Product Information		
Model No .	Specification	Description
980113071 ■	MS series Cable tray (W=60MM)	For MS, MK series Cabinet
980113072 ■	MS series Cable tray (W=100MM)	For MS, MK series Cabinet
980113073 ■	MS series Cable tray (W=200MM)	For MS, MK series Cabinet

Remark : When ■ =0 , denotes Gray(RAL7035SN), When ■ =1 , denotes Black(RAL9004SN)

CABINET
SYSTEMS

Accessories



Cable Management Slot

Product Information		
Model No .	Specification	Description
980113003 ■ -XX	MS metal cable management slot	For 800 width MS cabinet , XX denotes U
980113004 ■ -XX	MK metal cable management slot	For 800 width MK cabinet , XX denotes U
990101035-XX	MK plastic cable management slot	For MK cabinet(blue) 35*35 , XX denotes U
990101036-XX	MS plastic cable management slot	For MS cabinet(blue) 35*35 , XX denotes U
990101037-XX	MK plastic cable management slot	For MK cabinet(blue) 50*50 , XX denotes U
990101038-XX	MS plastic cable management slot	For MS cabinet(blue) 50*50 , XX denotes U

Remark : When ■ =0 , denotes Gray(RAL7035SN), When ■ =1 , denotes Black(RAL9004SN)



Cable Management



Blank Panel

Product Information		
Model No .	Specification	Description
980113036 ■	1U blank panel	19" installation
980113037 ■	2U blank panel	19" installation
980113038 ■	3U blank panel	19" installation
980113039 ■	4U blank panel	19" installation
980113065 ■	1U fast removable blank panel	19" installation
980113066 ■	2U fast removable blank panel	19" installation

Remark : When ■ =0 , denotes Gray(RAL7035SN), When ■ =1 , denotes Black(RAL9004SN)



Brush Panel

Product Information		
Model No .	Specification	Description
980113067 ■	1U Brush type cable management	19" installation(with 1piece brush)
980113068 ■	MS Serie cable entry with brush	For MS Serie cabinet, with 1piece iron brush

Remark : When ■ =0 , denotes Gray(RAL7035SN), When ■ =1 , denotes Black(RAL9004SN)



Drawer

Product Information		
Model No .	Specification	Description
980113056 ■	2U Drawer	19" installation , D : 350MM
980113057 ■	3U Drawer	19" installation , D : 350MM
980113058 ■	4U Drawer	19" installation , D : 350MM
980113059 ■	5U Drawer	19" installation , D : 350MM

Remark : When ■ =0 , denotes Gray(RAL7035SN), When ■ =1 , denotes Black(RAL9004SN)



Keyboard Panel



Fan Unit



M12 Adjustable Feet



Screws & Nuts

CABINET
SYSTEMS

Accessories

Product Information		
Model No .	Specification	Description
980113060 ■	1U Metal Cable Management with cap	19" installation
980113061 ■	2U Metal Cable Management with cap	19" installation
980113062 ■	1U Metal Cable Management with cap	19" installation with mark
980113063 ■	2U Metal Cable Management with cap	19" installation with mark
980113064 ■	1U Metal Cable Management with cap	19" installation with bayonet

Remark : When ■ =0 , denotes Gray(RAL7035SN), When ■ =1 , denotes Black(RAL9004SN)

Product Information		
Model No .	Specification	Description
980113035 ■	Keyboard panel	For different depth network cabinet, 19" installation

Remark : When ■ =0 , denotes Gray(RAL7035SN), When ■ =1 , denotes Black(RAL9004SN)

Product Information		
Model No.	Specification	Description
980113074 ■	2Way Fan Unit	Universal 2 Way Fan Unit, with 2 pcs 220V cooling fan with cable
980113075 ■	2Way 1U Fan Unit	19" installation ,with 2pcs 220V cooling fan with cable
980113076 ■	3Way 1U Fan Unit	19" installation ,with 3pcs 220V cooling fan with cable
980113077 ■	4Way 1U Fan Unit	19" installation ,with 4pcs 220V cooling fan with cable

Remark : When ■ =0 , denotes Gray(RAL7035SN), When ■ =1 , denotes Black(RAL9004SN)

Product Information		
Model No .	Specification	Description
990101026	M12 Adjustable Feet	80MM length

Product Information		
Model No .	Specification	Description
990101005	M6 Screws & Nuts	M6*12 Common type, Trivalent chromium zinc

CABINET
SYSTEMS

Accessories



Castor

Product Information		
Model No.	Specification	Description
990101010	2" Heavy duty castor	Installation Dimension36*53
990101011	2" Castor with brake	Installation Dimension36*53 with brake
990101012	2.5" Heavy duty castor	Installation Dimension36*53
990101013	2.5" Castor with brake	Installation Dimension36*53 with brake



Cantilever Shelf

Product Information		
Model No .	Specification	Description
980113040 ■	60 Cantilever Shelf- I (1U)	For 600 Depth Network Cabinet, 19" installation, 300mm depth
980113041 ■	80 Cantilever Shelf- I (2U)	For 600 Depth Network Cabinet, 19" installation, 500mm depth

Remark : When ■ = 0 , denotes Gray(RAL7035SN), When ■ = 1 , denotes Black(RAL9004SN)



Cooling Fan

Product Information		
Model No .	Specification	Description
100207015-CP	Black 220V cooling fan (oil bearing)	120*120*38mm , 220V
100207016-CP	Black 110V cooling fan (oil bearing)	120*120*38mm , 110V
100207017-CP	Black 48V direct current fan (oil bearing)	120*120*38mm , 48V
100207018-CP	Black 220V cooling fan (ball bearing)	120*120*38mm , 220V
100207019-CP	Black 110V cooling fan (ball bearing)	120*120*38mm , 110V
100207020-CP	Black 48V direct current fan (ball bearing)	120*120*38mm , 48V



Baying Kits

Product Information		
Model No .	Specification	Description
990101016	MS/ML Baying Kits Without Side panels	SGLC, use for combining cabinets without side panels (MS/ML are in common use)
9801160402	MS/ML Baying Kits With Side panels	SGLC, use for combining cabinets with side panels (MS/ML are in common use)
990101017	MK Baying Kits Without Side panels	SGLC, use for combining MK cabinets without side panels
9801131112	MK Baying Kits top type	SGLC , use for combining MK cabinets from the top

CABINET
SYSTEMS

Accessories



DATEUP KH-6K



DATEUP KH-8FL-16A



DATEUP KH-6KF



DATEUP KH-8LY-16A



DATEUP KH-8KG-XGB



DATEUP KH-6KG



DATEUP KH-81PKK-16A



DATEUP KH-8D



DATEUP KH-6KG-YB



DATEUP KH-8K-DB

PDU

Product Features

- Standard cabinet 19 inch rack mounting for power supply of equipment
- Various performance and specifications are available for customization
- Product performance is stable, quality assurance

Product Information		
Model No .	Name	Description
990103001 ■	DATEUP KH-6K	1U10A All-usage type socket, 10A national standard plug, with main switch, 1.8m-length, 1.5m ² cable, 19" horizontal and vertical installation, blue trip, aluminium alloy case
990103002 ■	DATEUP KH-6KG	1U10A All-usage type socket, 10A national standard plug, with main switch, overload protection, 1.8m-length, 1.5m ² cable, 19" horizontal and vertical installation, blue trip, aluminium alloy case
990103003 ■	DATEUP KH-6KF	1U10A All-usage type socket, 10A national standard plug, with main switch, lightning protection, 1.8m-length, 1.5m ² cable, 19" horizontal and vertical installation, blue trip, aluminium alloy case
990103007 ■	DATEUP KH-8D	1U10A All-usage type socket, 10A national standard plug, with indicator light, 1.8m-length, 1.5m ² cable, 19" horizontal and vertical installation, aluminium alloy case
990103007 ■	DATEUP KH-8KG-XGB	1U10A New national standard socket, 10A national standard plug, with main switch, overload protection, 1.8m-length, 1.5m ² cable, 19" horizontal and vertical installation, aluminium alloy case
990103007 ■	DATEUP KH-8FL-16A	1U16A All-usage type socket, 16A national standard plug, lightning protection, 1.8m-length, 2.5m ² cable, 19" horizontal and vertical installation, blue trip, aluminium alloy case
990103007 ■	DATEUP KH-81PKK-16A	1U16A All-usage type socket, 16A national standard plug, 16A1P air switch, 1.8m-length, 2.5m ² cable, 19" horizontal and vertical installation, aluminium alloy case
990103007 ■	DATEUP KH-8LY-16A	1U16A All-usage type socket, 16A national standard plug, Level 3 lightning protection, 1.8m-length, 2.5m ² cable, 19" horizontal and vertical installation, aluminium alloy case
990103027 ■	DATEUP KH-6KG-YB	1U UK type socket, UK type plug, with main switch, overload protection, 1.3m-length, 1.5m ² cable, 19" horizontal and vertical installation, blue trip, aluminium alloy case
990103028 ■	DATEUP KH-8K-DB	1U German type socket, German type plug, with main switch, 1.8m-length, 1.5m ² cable, 19" horizontal and vertical installation, aluminium alloy case

Remark : When ■ = 0 , DATEUP Brand LOGO, 当 ■ = 1 , No brand for neutral LOGO