

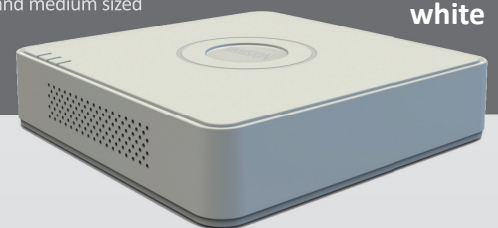
## DS-7100HWI-SL

### Mini DVRs



#### Compact size, big performance

Developed on the basis of the latest surveillance technology, Hikvision DS-7100 series DVR can provide not only high performance but also more compact design with more affordable cost, which make it very suitable for small and medium sized applications, such as homes, offices, retail shops, convenience stores, restaurant, etc.



white



Retail



Home



office

#### » Compact design

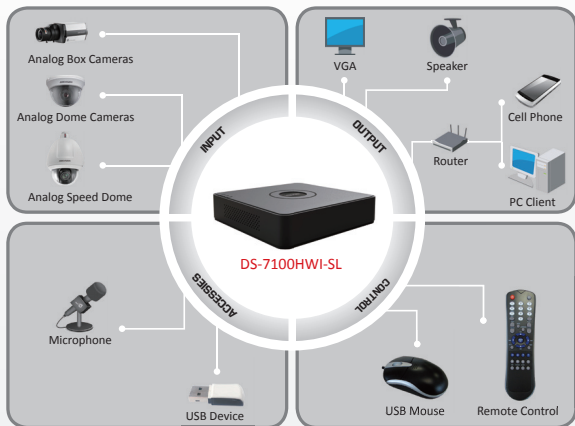
Hikvision new DS-7100 series DVR is adaptable in any installation space with smaller case design and to give you more flexibility.

#### » HD resolution recording

DS-7100 series DVR can support 960H (PAL:960×576,NTSC:960×480) resolution real-time recording, which can offers you HD video surveillance experience.

#### » Easy to use

With embedded web server, mobile device viewing supported and friendly user interface, you can get to use Hikvision DS-7100 series DVR very easily.



## DS-7100HWI-SL Mini DVRs

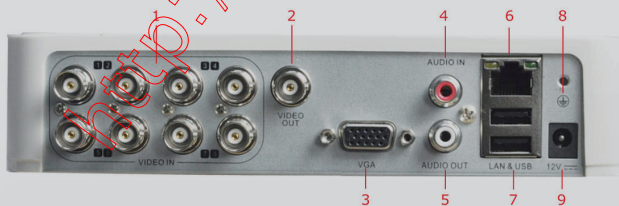
- H.264 & dual-stream video compression
- Full channel@WD1(PAL:960×576,NTSC:960×480) resolution real-time recording
- Simultaneous VGA and CVBS outputs
- Alarm for video loss, motion detection, tampering and abnormal signal
- Embedded WEB server for remote access
- Mobile view on 3G/Wifi enabled device (iPhone, Android, Blackberry)
- Support 1 SATA HDD and 2 UBS2.0 ports for easy backup

Model	DS-7104HWI-SL	DS-7108HWI-SL	DS-7116HWI-SL
<b>Video / Audio input</b>			
Video compression	H.264		
Video input	4-ch	8-ch	16-ch
Video input interface	BNC (1.0 Vp-p, 75 Ω), PAL/NTSC self-adaptive		
Audio compression	G.711u		
Audio input	1-ch, RCA (2.0 Vp-p, 1 kΩ)		
Two-way audio input	1-ch, RCA (2.0 Vp-p, 1 kΩ) (using Audio In)		
<b>Video / Audio output</b>			
VGA output	1-ch, resolution: 1080P: 1920×1080/60Hz,SXGA: 1280×1024/60Hz,720P: 1280×720/60Hz,XGA: 1024×768/60Hz		
CVBS output	1-ch, BNC (1.0 Vp-p, 75 Ω), resolution: PAL: 704 × 576, NTSC: 704 × 480		
Encoding resolution	WD1 / 4CIF / 2CIF / CIF / QCIF		
Frame rate	25 fps (P) / 30 fps (N)		
Video bit rate	32 Kbps ~ 3072 Kbps, or user defined (Max. 3072 Kbps)		
Audio output	1-ch, RCA (Linear, 600 Ω)		
Audio bit rate	64 Kbps		
Dual-stream	Support; Sub-stream: CIF / QCIF @ 25 fps (P) / 30 fps (N)		
Stream type	Video, Video & Audio		
Synchronous playback	4-ch	8-ch	16-ch
<b>Hard disk</b>			
SATA	1 SATA interface		
Capacity	Up to 4TB capacity		
<b>External interface</b>			
Network interface	1, RJ45 10M / 100M Ethernet interface		
USB interface	2 × USB 2.0		
<b>General</b>			
Power supply	12 VDC		
Consumption (without HDD or DVD-R/W)	≤ 5W	≤ 7W	≤ 9W
Working temperature	-10 °C ~ +55 °C		
Working humidity	10% ~ 90%		
Chassis	1U chassis		
Dimensions(W × D × H)	200 × 200 × 45 mm		285 × 210 × 45 mm
Weight (without HDD or DVD-R/W)	≤ 0.6 kg	≤ 1 kg	≤ 1.5 kg

### Available models

> DS-7104HWI-SL, DS-7108HWI-SL, DS-7116HWI-SL, DS-7116HVI-SL

### Rear Panel of DS-7108HWI-SL



1. VIDEO IN
2. VIDEO OUT
3. VGA Interface
4. AUDIO IN, RCA Connector
5. AUDIO OUT, RCA Connector

6. LAN Network Interface
7. USB Interface
8. GND
9. 12 VDC